
DOI: <https://doi.org/10.53555/eijas.v3i4.56>

主要从事自然科学研究 姓名 孙纯武

SUN CHUNMU

地址 中国 江苏省扬州市西湖镇蜀秀花园 20 幢 805 室

5 密码 ***** 联系信息 qq 号 458669609 手机 18652544068 电子邮件 (EMAIL) yzscw0514@163.com

附加信息

10 行业 工程/制造感兴趣的领域 自然科学特长 发明新产品和写如太极话天下科普书

职称 研究员

单位名称、江苏省扬州三力电器集团 通信地址、江苏省扬州市西湖镇蜀秀花园 20 幢 805 室, 邮编 225008 电
子信箱: yzscw0514@163.com qq 号 458669609

再探统一场理论的研究 (A STUDY ON THE THEORY OF UNIFIED FIELD)

French scientists Laplace requirements: we must get the current state of the universe as the result of its former state, and the reason for the later development, if there is a kind of wisdom to understand its real 30 respective position, if it is also great to enough to analyze all of these things, it can use a single formula summarizes the movement of the universe, the object, from the biggest to the smallest atom, all without

是动态场。表示各种场上的质量或万物自旋系统的时间，是作一元复始有序向无穷环绕运动。而在空间是作无序运动也就是会向正反两个方面发展。也表示质量的大小被场复制出能量或力的多少。设、解、论某一种场上的质量时，必须结合质量再生场和统一的场是大中小那一种质量，和另一张图的向心力和离心力的推挤摩擦力大小，或如事件的好与坏，正与反，原子还是质子等不同问题，就要结合起来运用 5 一样，才能演算时得到正确结果。而椭圆图甚至是 162 种变化来设题解题。若解原子周期，如一卦预设原子周期中元素氢。若解人生老病死，预设的一卦为男性。再来论他少年还是老年，是工作还是生病了去查预设出的数字内容，就能直达解题。因统一场理论就是要以简单去明白完善周易的八卦。图大圆圈最上部，表示一个质量与时空运动时间的开始，或是在这样条件下运动的物体，它没有什么 10 力变化，称它为磁吸引力面场。它复制的力以数字表示 1，匀速运动。图上部旁一边的质量与时空发生了湍流，从上向下加速运动，做出了推力 2。称它为扩张力面场。在它下部，加速惯性将质量复制出更多力，如使地球椭圆度大。称它强作用力面场，或称再生力面场，它复制出的推力 3。

这边做出是离心力的推力，从上向下或从高压向低压加速运动。

15 图最下部为磁排斥力面场，表示一个质量与时空运动到这种场或时间时，系统自旋最慢时向心力占上风，自旋最快时离心力占上风，复制出力不规则已减少到 2。（在实际操作时应把它定位随着速度加快，它在 2 以上递增力。如地球不匀速最快这一年最明显，地下板块位移运动变化大、地磁场无规则性、地下水被复制出也最多。地震机会多，震级强，破坏力大，包括易使各种操作人员在同样情况、同样速度下操作失控，发生如车祸及在这个地区上空飞行的飞机坠毁等。

20 因此，涡旋的气体利用惯性力越过了磁排斥力面场向上冲击运动。

由于这一边是向心力面场，磨擦力、重力消耗能量，使质量向上做降速运动，被复制出的能量或力为 1。称重力面场，作椭圆运动。这种椭圆运动在物理上称向心运动，因此，得到了向心力。

好比乒乓球从一米的高度往硬地面下落，每次反弹损失后，高度还是超过了圆心半径。所以，气流

25 得到了向心力以缩小的环流越过中心高度作旋转，自绕成像宇宙幅射形成的圆环大外圈一样，复制出的能量或力为 0。称向心力面场 后来到大外圈顶面上的热气体也不沿消耗力多的圆圈运动，自然从椭圆圈顶面上分成向两旁边下作 8 字形锥度涡旋轨迹环绕运动，除了自身的质量，还利用锥度的地利条件获得了如惯性力、向心力就向中心加速环绕运动。因惯性力、向心力都是系统的力，不要自身提供力。

因此，气流一次次地向两端头作螺旋式向小环绕，就构成了一个完整的球壳体，就形成三维的空间来复制能量和转化的机制过程。由于任何物质聚后，球壳体上都有物质与物质之间的空穴，和壳体内部有空穴。有了空穴，就起到了三种作用，一、球壳体上每一个小空穴，便使内外温度和压力不统一。二、外部的热气流就源源不断向空穴中心低压处环绕流，就像被滚雪球似地，被环绕滚成了气旋团。在气旋团内部的小圆圈空穴中。

35 实际产生了两种场中心，一个被向心力环绕构成的涡旋中心称统一的场中心。（如同中央政府）当场上运动发生能量问题，统一各作用力，并遗传智慧能量的作用。

一个被系统离心力将质量抛物线运动，在加速中交换出能量偏中心的小圆圈的空穴场是正反场的转折点、突变点，表示它是质量与空间组合的神奇智慧再生场。向心力小进入中心的零碎物体被涡旋成团。

向心力大这个场就产生出涡旋吸力及引力。因此中心的物体如光就被系统的离心力推出去。或被转化出

40 高温高压或化学键组合成新物体。就像人们使用的工具、兵器等条件，是形象地被用来复制能量或力或再生的新事物。（它只能被复制出一份份更多原质量如文件的字不多不少，是不能改变原质量）。因它不是转化的系统。

它有统一质量与时空标准，场的活力越大、或被系统离心力运动场结构偏得越大，或大质量量与时空的工具、兵器等复制出的能量或力就越多。

45 反之，当场小或物体等每被移向重力面场向心力面场及向中心环绕运动时，复制出的力就越少等问题。

这两种场我在 2009 年《创立统一场论》(Establishment of the Unified Field Theory)。美 Marsland Press 学术竞技场上发表英文论文中有这两个中心。而十多年后今天，科学仪器才拍出黑洞空穴中心也有互绕运动。一个作向心力小气旋团，另一个作离心力就大些的气旋团情景。证明了我的椭圆图正确性。因为牛顿是两点不运动或 0 运动，也有引力。里奇是一点运动的圆周运动，有引力。

50 我的向心和离心属于两点或多点互绕运动，才能被复制出更多能量，使事物进化或发展。而英语用收敛和扩散容易误导成像汽球的同时收缩和膨胀来设题解题，就不能自圆其说。实引力来自涡旋作出的吸力或拉力。

因此，被向心力环绕进入小空穴中的气体或小分子，被滚雪球似地复制成一个一个活体结构的小气旋团或椭圆团。形成了外壳、小内圈空穴、空穴中的小气旋团三位一体的椭圆球结构一一也是在不同的

事物上有不同表叙。如原子、太阳内黑子、细胞及椭圆图表叙的来历，去设解论万事万物微观运动发展 5 好或坏难题。

如图中向心力指暗能量，离心力指暗物质。六种场力面也可指不同能量的如电磁、弱力、强力、引力、热力、光子场的六种力学。或夸克、中子、等。四种速度也可置换出 11 维几何时空概念。但这样细分容易造成解难题结果混乱。

如已知太阳是椭圆球，进行第二次运动计算或论述，应将黑子的质量被系统离心力推出去做功的质 10 量大小、距离中心远近所得到复制的力后，再按这个新数字去依次相乘惯性能，便使太阳转速逐步加快不再沿消耗力少的如椭圆运动，发展向消耗力多的圆圈运动，如椭圆图上六种力面场上的 1、2、3、2、1、0 数字能量后，应每一次给如磁排斥力面场 2 加 0.25，重力面场 1 加 0.5、向心力面场零加 0.75。磁吸引力面场 1 加 0.5、扩张力面场 2 加 0.25。再生力面场不加，使太阳表面上的黑子增多和大，推挤太阳的外壳光球层，太阳从椭圆球向质量大的圆球进化扩展膨胀了。以后又向椭圆运动，再以次 3 数字起往下减 0.15、0.25、0.5、0.75。或用中国汪一平的数学公式描述，引自《点态规范场与相对论构造》（2017 第八届国际计算方法会议论文集）：

$$W = (1-\eta^2)^Z W_0 \quad (1) \text{ 其中: } (1-\eta^2)^Z = (1-\eta^2)^{+Z} + (1-\eta^2)^{-Z} + (1-\eta^2)^{0Z} = \{1/2, 1\} \{0 \sim 1\};$$

(2)

$$(1-\eta^2)^Z = (1-\eta^2)^{+Z} \cdot (1-\eta^2)^{-Z} \cdot (1-\eta^2)^{0Z} = \{1/2, 1\} \{0 \sim 1\}; \quad (3)$$

20 $(1-\eta^2)^{0Z} = (1-\eta^2)^{+Z} + (1-\eta^2)^{-Z} = (1-\eta^2)^{+Z} \cdot (1-\eta^2)^{-Z}$ (4) 有公式 (1) 联立方程可以得到:

$$(1-\eta^2)^Z = \{(0, 1/2, 1)^{(0, 1/2, 1)}\}^Z; \quad (5)$$

根据宇称不守恒原理 $(1-\eta^2)^{+Z} \neq (1-\eta^2)^{-Z}$ ，可是公式 (1) 为什么会相等，这是能量的不可称性，在质量不变条件下，经过突变点空间发生改变，能量产生不对称性。

25 式中：W 最后、预测条件；W₀ 初始条件；(1-η²)^Z 数据、事件变化规律；(1-η²)^{+Z} 数据事件收敛变化；(1-η²)^{0Z} 数据事件突变点或中心点或极限点；(1-η²)^{-Z} 数据事件扩散变化；

因此,在一个结构中遵守如质量、作用力、加速度和时间，以及地利等条件设题解题的 $m \text{ force } axKg \text{ The right place} \neq m \text{ force} \neq a \neq t \text{ Min The right place}$ 定见式启发您去设题解题。“≠”告知设题解题人质量在系统内运动速度中，复制能量或力的极限问题。有了这个极限，就可以知道事物生老病死和不匀速周期快 30 慢的时间。无论过去、现在及将来，无论是星系还是原子,是动物还是植物,是宏观还是微观。“≠”给出了它们都存有 两种如快和慢的矛盾，构成矛盾转化是速度的快慢，调和矛盾的是时间。

因此,在一个结构中遵守如质量、作用力、加速度和时间，以及在什么样地利环境条件下等作用力去 设题解题；“≠”也表示出在自转极两边运动，所受到向心力的收敛或离心力的扩散力不同，如光子、正 负电离子合并与分裂、生物生长与消亡、宇宙的黑洞与再生等不同问题。就要根据这些新数字，理清它 35 各自以什么样的过程生条件，和受那一种作用力进行合成去复制力。就要用不同的形式去论述,或用不同的公式去计算。或各事各论述才能解决问题。

所以说，有了统一场理论和椭圆图以及公式中那么多克星数据，研究者心境自明，就知构成原始天体的物质基础是受那一种作用力的运动，天体与天体之间也是相互作用关系、天体家族包括万物都是相对统一的椭圆的收敛与双曲圆的扩散运动规律（统一称椭圆），它的原理机制与转化是：质量与时空通 40 过突变（物理称无质量的希格斯子）复制出能量、天体是从简单向复杂，从低级向高级一步步转化演化的。宇宙间万物或天体是谁的质量大或是方法得当，谁在这个活体统一场上是统一的场。不存在一成不变。它们是：匀速与不匀速、规则与不规则、对称与不对称、连续与不连续的椭圆运动向圆球运动又向椭圆运动的序。解构宇宙天体物理应先完善物理理论入手才能解决问题。解决了物理学理论一切突破口问题解决了，就知引力、电磁力、强作用力、弱作用力被统一，是发生在一个活体场上被复制出惯性

45 力多少的变化，不存在还有一个外来的场去统一或发展它。

这样理清了它们性质,或存在于什么样运动结构中发生的问题。如是直线运动，还是在斜面上作任意 椭圆运动；就能对它们运动作全面、系统、有联系、有发展的眼光来论证如星球在星系这个统一场上运 动,所发散出的各种不同随机问题。也能简单快捷地方法去论证它为什么会如某一种场上运动有快或慢的 问题。同时，统一场理论对牛顿、爱因斯坦等质量转换能量观及量子论,超弦论等各种理论，也作了归纳 50 和科学灵活运用它去设题解题。

统一场理论是个万能理论，一旦得到人们的认同和应用，将会去建立起更雄伟的如钢筋混凝土连续连接的框架结构，新的哲学和物理学等科学大厦去设题解题。并能发明出永动机，一个科学大发展的道德化新时代去造福人类。例题一：如何解决好房地产开发问题。统一的场就用中央政府,质量再生场就用经济政策，各个场力面就用各种质量思想的人群。在同一时间开始运动时,假定他们都以最大质量三出现，设原始类去搞土地 5 出售、出租，复制出能量为一、进步类将钱投房地产开发为二、先进类将更多钱除了作房地产开发，还发展其他项目为三，摇摆不定投机类市场什么赚钱就做什么生意。如收、卖房地产赚钱为二、落后类和困难类将积累钱去购房屋自己居住，为一、为 0 来构成了一个椭圆运动体系。当先进有经营管理能力有资金的人场办工厂、办公司，好比是在质量再生扩张力面场、再生力面场上，经过加速和一段时间的运动,如用数字表示三乘三乘二、三乘三乘三,他们分别做出力是十八和二十七；而经济政策再生能量三和 10 没有经营管理能力、落后类和困难类的人场靠打工去挣钱，这时就好比是在重力面场、向心力面场上运动，他们没有暗能量、暗物质的帮助，经过一年时间的运动后，如用数字表示,他们经济上的积累是三乘三乘一、三乘三乘零,他们分别得到的力是九和零。

从统一场理论中知道，这些人群各经一年年的力复制积累进化不守恒加大了。如原始类、落后类和困难类将积累钱去购房屋居住是跟不上物价的上涨，就出现供大于求或对社会的不满情绪。

15 因此，质量大的中央政府，首先要根据事件是在计划经济还是在市场经济结构中运行，它们发展时的运动速度和组织结构，及政策或策略是否损害共同利益，超出自身一定承受能力的比例关系，也就是超出最大或最小极限时，才要随机地利用不同智慧，如政策、法令，或在自身运动力结构中调整，去统一它的不合理的力。如在市场经济结构中运动，比较复杂，就要综合治理，因为它的危害性同高额运行的股票是双胞胎。一个掏空企业利润空间，一个是掏空社会各空间。所以治标时要将违法出租和出售土地、违

20 法搞房地产的单位或个人、用余利买卖房地产、银行内不负责任贷款、只调高低收入人群工资、对困难户进行购房补贴、严打余利违章建筑，和明知拆迁还突击装饰来抬高房价成本。及对潜在如低价拍卖公有制房产，支付高价拆迁费等问题进行综合治理。让事物内部各组织结构，在强大的运动或精神运动造势中及法治制度化中，产生凝聚力的统一。这样就能像椭圆图六种力面场那样有一定规律，既相适应、又相矛盾的相对有序和谐不规则合力运动速度中搞房地产。绝不是将事物或事件在运动发展中，被视作

25 和圈定或调节为没有一定比例、没有一定矛盾、没有一定差别的同一和单调运动或无政府政策管理发展形态中搞房地产。

如果中央政府不能及时制定出什么新的政策，或强制统一不了那些质量小而方法得当的人和事及高能耗，就缺少了民心的向心力，社会将向不安定发展。

例题二：为什么星系两边出现不同一运动速度的旋臂？这要将研究的难题快和慢放在椭圆图结构快

30 和慢的位置上，就能找到解决快慢问题的原因来。如一些质量小的星球，或已从扩张力面场、再生力面场运动到重力面场、向心力面场上的一些质量大的星球，它们是从星系斜面下作向上运动。由于这两种场上运动消耗能量多，一颗颗星球被重力、摩擦力引力等逐步向星系中心涡旋吸力大收缩弯曲运动，就形成了密度波。

而另一边星球是在星系斜面上作向下运动，有一股加速惯性离心推力。星球内做功的如地球的地核在

35 系统中，每被离心力向外推移运动一步，就对地幔再生力面场内壁岩石施力越多，也就加大了球体域面上地壳小活动板块活动和运动的力。同时地核里面有些小颗粒物质，被系统自旋就像被滚雪球似的，被旋转复制成大大小小的火山蛋球体，它铁的质量被离心力和向心力推挤摩擦不断加工，使它同地核一样也产生了磁性铁球。不断受离心力推动，发生漂升不在沿椭圆图上消耗力少的椭圆运动，发展向消耗力多的圆圈运动，就失去了复制出更多力机会。这时自旋就被质量大的摩擦力、引力、重力等统一了强度，

40 使它发生了收缩呈空 8 字形向南北极低温作螺旋式向心环绕。使南北极球体处不断受到磁体的光临积累，就产生了南北极的磁场；也就是由如太极子电子等加速度的快慢和分布的数量多少，铺设了一条所谓磁场高速公路通道，转化出质量大小的电流等。

地壳、地幔的一块块板块在扩张力面场上突出下垂时结合处空出的空间，却造成了天空磁层多个大

空洞（可参看解开八卦图那种机内部结构图）；而朝太阳一面白天的地壳上一块块小活动板块，被离心力

45 从上向下向外突出下垂加速运动时，推挤摩擦转化出光子多，夜间一块块板块向上运动消耗能量多，是做向中心收缩弯曲做降速运动，只能将一个个小分子被向心力复制出电子，这种球体两边有规律地扩张和收缩运动于南北极磁场上，就拉断了由地核旋转运动和地幔板块所作椭圆运动的磁感应线。因此，就能从机械能转换成电流加大加快自转能力了。

就是说，星系两边不同一运动速度的旋臂，一、星系一边是作向心力有拉力，特别向心力推挤摩擦转

50 化出的光是射向中心黑暗处。不但使光变暗，而且涡旋转化出吸力、引力，还使光逃逸不出。另一边是作离心力有推力，使转速加快推挤摩擦转化出光子是向外射，再同太阳反光镜结合光就亮白或红移。其次星系两边星球质量不同，一边是暗星，它们处于质量转化的早期，自转速度较慢。另一边白矮星是质量转化的后期，它们合成转化复制，和再合成转化复制出的力就多，自转速度必然要快，另一方面是由于星系中心周围各种场力面的质量不同，星球运动到这个环境中，被复制出不同力，就发生运动速度的快慢。

另外，星球倾斜极的度数大小，也决定星球质量在速度中被复制力极限的多少，同时还会出现星系中心两边有不同的不匀速周期的快和慢现象，以及做出的椭圆运动轨道，倾斜极的度数大小不同等问题。而这种

5 系统中的难题，如果用现有物理理论和定律，就不能解释清楚星系旋臂上的星球运动有快慢等问题了。

本人发明的《偏心旋转发动机》

属于发动机技术领域，具体而言，涉及一种偏心旋转发动机。

背景技术

现有的发动机在对外做功时需要消耗大量的能量，因此，随着社会科学技术的进步和发展，如何减

10 少发动机的能源消耗受到了人们的广发关注，并成为科学家们研发的重点方向。

实用新型内容

为了解决上述问题，本实用新型的目的在于提供一种偏心旋转发动机，以降低发动机的能耗。

本实用新型所采用的技术方案为：

偏心旋转发动机，其包括两个轴承座以及空心转轴；所述空心转轴包括中空管状的外壳以及分别设

15 置于所述外壳的两端端面的中空管状的轴头；所述轴头的一端沿周向设置有环形盘面，并通过所述环形盘面与所述外壳连接，且所述轴头与所述外壳的内部连通；所述转盘与所述外壳位于同一轴线，且所述转盘的半径小于所述外壳的半径；两个所述轴承座相对设置，且所述壳体的两端的所述轴头分别与两个所述轴承座上的第一轴承转动配合；

所述外壳的内部设置有偏心旋转组件；所述偏心旋转组件包括中心轴、两个做功圆盘、两个单向轴承以及多个铰链铁；所述铰链铁包括向心铁和挂铁；两个所述单向轴承相对套设于所述中心轴上，两个所述做功圆盘分别套设于两个所述单向轴承的外侧，并分别通过两个所述单向轴承与所述中心轴转动配合；所述向心铁设置于所述两个做功圆盘间，且所述向心铁的底端分别与两个做功圆盘铰接，所述向心铁的顶端与所述挂铁的一端铰接；

所述中心轴的两端分别穿过所述外壳的两端的所述轴头，并分别与中心轴固定架的第一定位孔连接；所述中心轴与所述外壳的轴线平行，并偏向与所述外壳的轴线的一侧；所述做功圆盘于所述中心轴的偏心方向与所述外壳的内侧壁接触。

进一步，两个单向轴承的内圈的内侧设置有双孔轴；所述双孔轴的一边孔套设于所述中心轴的外侧，所述双孔轴的另一边孔内设置有定位轴，且所述定位轴与所述固定架的第二定位孔连接；所述双孔轴远离所述中心轴的一端抵住所述单向轴承的内圈，所述做功圆盘呈偏心状态。

进一步，所述向心铁的顶部设置有用于容纳所述挂铁的凹槽，所述凹槽内设置有与所述挂铁的一端转动配合的销轴。

进一步，所述第一轴承为调心轴承。

5 进一步，两个所述做功圆盘间设置有调心轴承，且所述调心轴承套设于所述空心轴上。

进一步，所述外壳的一端的轴头连接有传动机构。

进一步，所述传动机构为传动齿轮、传动皮带或者多片式摩擦离合器。

进一步，所述外壳的另一端的轴头套设有飞轮。

进一步，所述飞轮通过单向轴承与所述轴头转动配合。

10 进一步，所述偏心旋转发动机还包括工作台，所述固定架以及两个所述轴承座均设置于所述工作台上。

本实用新型的有益效果：

本实用新型所提供的偏心旋转发动机，在空心转轴转动时，可以利用外壳内的偏心旋转组件存储/释放能量，并在释放能量过程中充分利用偏心旋转组件的重力作用压动外壳，使其将能量传递给外壳，从而有效地利用了能量，降低发动机的能耗。

附图说明 为了更清楚地说明本实用新型实施例或现有技术中的技术方案，下面将对实施例或现有技术描述中所需要使用的附图作简单地介绍，显而易见地，下面描述中的附图仅仅是本实用新型的一些实施例，对于本领域普通技术人员来讲，在不付出创造性劳动的前提下，还可以根据这些附图获得其他的附图。

20 图 1 是实施例中所描述的空心转轴的内部结构示意图。

图中标号为：

1、环形盘面；2、外壳；3、做功圆盘；4、挂铁；5、向心铁；6、调心轴承；7、第一单向轴承；8、中心轴；9、轴承座；10、多片式摩擦离合器；11、飞轮；12、第二单向轴承。

具体实施方式

25 为使本实用新型的目的、技术方案和优点更加清楚，下面将对本实用新型的技术方案进行详细的描述。显然，所描述的实施例仅仅是本实用新型一部分实施例，而不是全部的实施例。基于本实用新型中的实施例，本领域普通技术人员在没有做出创造性劳动的前提下所得到的所有其它实施方式，都属于本实用新型所保护的范围。

实施例

5 如图 1 所示，本实施例提供了一种偏心旋转发动机，其包括两个轴承座 9 以及空心转轴；所述空心转轴包括中空管状的外壳 2 以及分别设置于所述外壳 2 的两端端面的中空管状的轴头；所述轴头的一端沿周向设置有环形盘面 1，并通过所述环形盘面 1 与所述外壳 2 连接，且所述轴头与所述外壳 2 的内部连通；所述转盘与所述外壳 2 位于同一轴线，且所述转盘的半径小于所述外壳 2 的半径；两个所述轴承座 9

相对设置，且所述壳体的两端的所述轴头分别与两个所述轴承座 9 上的第一轴承转动配合；

10 所述外壳 2 的内部设置有偏心旋转组件；所述偏心旋转组件包括中心轴 8、两个做功圆盘 3、两个第一单向轴承 7 以及多个铰链铁；所述铰链铁包括向心铁 5 和挂铁 4；两个所述第一单向轴承 7 相对套设于所述中心轴 8 上，两个所述做功圆盘 3 分别套设于两个所述第一单向轴承 7 的外侧，并分别通过两个所述第一单向轴承 7 与所述中心轴 8 转动配合；所述向心铁 5 设置于所述两个做功圆盘 3 间，且所述向心铁 5 的底端分别与所述两个做功圆盘 3 铰接，所述向心铁 5 的顶端与所述挂铁 4 的一端铰接；

15 所述中心轴 8 的两端分别穿过所述外壳 2 的两端的所述轴头，并分别与中心轴 8 固定架的第一定位孔连接；所述中心轴 8 与所述外壳 2 的轴线平行，并偏向与所述外壳 2 的轴线的一侧；所述做功圆盘 3 于所述中心轴 8 的偏心方向与所述外壳 2 的内侧壁接触。

基于上述结构的发动机，在空心转轴转动时，外壳 2 内的偏心旋转组件相应的转动；当偏心旋转组

件中的挂铁 4 由上向下运动时，处于下降状态的向心铁 5 和挂铁 4 在重力的作用下打开，增加力臂而通

20 过杠杆作用带动做功圆盘 3 转动，从而使做功圆盘 3 压动外壳 2 与外壳 2 一起转动，将偏心旋转组件的能量传递至外壳 2 驱动外壳 2 转动，从而充分地利用了偏心旋转组件的重力做功；当偏心旋转组件中的挂铁 4 由下向上运动时，处于上升状态的向心铁 5 和挂铁 4 合拢，进行储能并减小力臂，从而保持挂铁 4 可以运动至顶部以进行下次做功工作。

因此，该偏心旋转发动机可以利用外壳 2 内的偏心旋转组件存储/释放能量，并在释放能量过程中充

25 分利用偏心旋转组件的重力作用压动外壳 2，使其将能量传递给外壳 2，从而有效地利用了能量，降低发动机的能耗。

优选地，两个第一单向轴承 7 的内圈的内侧设置有双孔轴；双孔轴的一边孔套设于中心轴 8 的外侧，双孔轴的另一边孔内设置有定位轴，且定位轴与固定架的第二定位孔连接；双孔轴远离中心轴 8 的一端抵住第一单向轴承 7 的内圈，做功圆盘 3 呈偏心状态，从而可以使做功圆盘 3 可以更好地压动外壳 2 运动。

5 具体地，向心铁 5 和挂铁 4 一一对应，其数量均为八个；向心铁 5 的顶部设置有用于容纳挂铁 4 的凹槽，凹槽内设置有与挂铁 4 的一端转动配合的销轴，从而在挂铁 4 由下向上运动的过程中可以很好地收拢与凹槽内，更好地保持偏心旋转机构的转动储能。

优选地，两个做功圆盘 3 间设置有调心轴承 6，且调心轴承 6 套设于所述空心轴上；第一轴承为调心轴承。其中，调心轴承可以即可以承受径向载荷，也可已承受任一方向的轴向载荷，特别适用于重载或 10 振动载荷下工作，从而可以更好地保证偏心旋转组件的转动。

为了便于空心转轴对外作用，在外壳 2 的一端的轴头设置有多片式摩擦离合器 10，从而通过多片式摩擦离合器 10 便于连接从动转轴，进而使其带动从动转轴对外做功。

作为上述实施例的一种优选方案，上述外壳 2 的另一端的轴头套设有飞轮 11；同时，飞轮 11 通过第二单向轴承 12 与轴头转动配合。

15 基于上述结构的飞轮 11，不仅在转动后可以更好地减小空心转轴的能量消耗；而且，其还能协助空心转轴延时减速，并在加速时可以转化出更大的瞬间惯性力，从而更好地实现以小功率去对特殊设备需要短时间特大的力作用。

本实施例中，为了便于固定架和两个轴承座 9 以及空心转轴的设置，上述偏心旋转发动机还包括

工作台，并将固定架以及两个轴承座 9 均设置于工作台上，以便于其安装固定。

20 本实施例中，还可以选用传动齿轮或传动皮带等其他现有的传动机构代替多片式摩擦离合器 10，以便于空心转轴连接从动机构对外作用。

本实施例中，为了便于调节中心轴 8 的偏心位置，中心轴 8 固定架优选为可调节支架，从而实现中心轴 8 的偏心位置调节。

具体地，可调节支架包括支撑杆以及调节块；所述调节块滑动设置于支撑杆上，并可以沿支撑杆上

25 下移动，中心轴 8 的两端分别与相应的可调节支架的调节块连接，从而实现中心轴 8 上/下位置的调节固定。

同时，支撑杆的底部与工作台的顶面滑动配合，并可以沿工作台的宽度方向移动，从而实现中心轴 8 左/右位置的调节固定。

本实施例中，偏心旋转发动机的各组件可以采用 3D 打印工艺制造而成，也可以采用开模工艺制程 5 而成。

本实施例中，偏心旋转发动机的各组件可以选用不锈钢材料制成，也可以选用塑料或玻璃钢等绝磁材料制成，以供特殊设备的动力装置使用。

本实施例中，环形盘面 1 的边缘设置有安装孔，且环形盘面 1 通过螺栓与外壳 2 的端面可拆卸连接，从而便于环形盘面 1 与外壳 2 的组装/拆卸，进而便于对外壳 2 内的组件进行安装、检修等操作。

10 以上所述，仅为本实用新型的具体实施方式，但本实用新型的保护范围并不局限于此，任何熟悉本技术领域的技术人员在本实用新型揭露的技术范围内，可轻易想到变化或替换，都应涵盖在本实用新型的保护范围之内。因此，本实用新型的保护范围应以权利要求的保护范围为准。

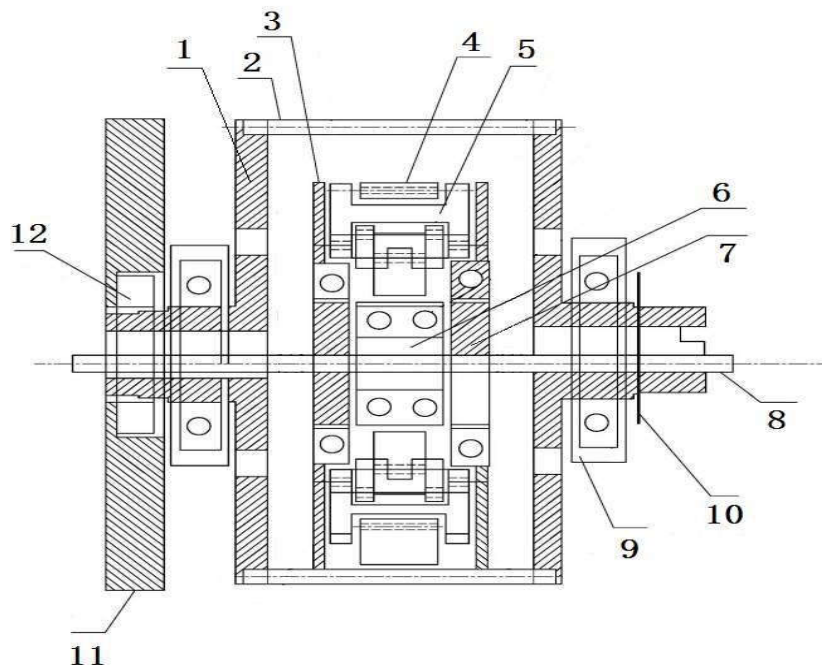


图 1 是一根中间粗两端细特制套筒状空心的轴。轴两端头的轴承设置在工作台轴承座上：在空心的轴腔体内设置中心轴、做功盘、八组向心铁、卦铁、铰链铁、可调心轴承等组成复

制能量的系统。最重要中心轴两端头从空心的轴腔体内穿过，再穿过工作台两端的调控装置套中时，是被定位偏在中心下的调控装置套中，做功盘一边的端面从上向下垂直落下时，是作切线方向定位落在大外壳的内壳一边的中段面上，从而形成了特制的杠杆。在做功盘的中间空穴中设置单相轴承，使做功盘下落时产生的压力压在大外壳一边上，受了下压的力大外壳就向下转动。做功盘只能在单向轴承球珠上作顺时针跟着转。

当安装好的《偏心旋转发动机》被立正时，由于做功盘设置偏中心的中心轴上，做功盘上设置八件卦铁的重量，就像涡轮上的一个个叶片，但它是活体的动态，如做功盘上每一次卦铁从上向下落压力，可以使做功盘转动一周有四分之一的时。而做功盘上八件卦铁每一次依次向下轮流落作功，这要八分之一时间就来为做功圆盘转动作一次力。

因此，这一边高处卦铁是从上向下离开中心做突出下垂作抛物线加速下落。作出是离心力的推力，同时，下落后的向心铁中段孔上设置的铰链铁就离中心轴远，这一边由铰链铁圈围成的偏心空间就大。而做功盘另一边是向心力的空间场，向上运动时消耗能量和力多。卦铁的重量在向心力面场上向上运动被向心拉力及磨擦力拉住作向中心轴收缩弯曲靠近运动。这一边上的向心铁中段孔面上的铰链铁，也就向中心轴更靠近了。这一边由铰链铁组合成的椭圆空穴就小。

由八件铰链铁圈围成托盘式的偏心空穴场。和空穴场存放可调心大轴承及配重的大双孔轴，它们的重量也是作垂直向偏中心的低处下落，做出了下压的力多。

同时，中心轴低于特制空心轴的自转中心，而且越接近中心轴正中反所需要的力越少及零，当向上运动的卦铁越过中心轴上部时也就得到了向心力，又一次作向下加速冲撞在大外壳内壳的一边工作面上向下压。八件卦铁的作用就像八个人在水车轴上一边各人的两只脚，是不停地在自己的轴线位置工作面上，一上一下地踏水车水一样。水车上另一边是空档没人作功车水，仅有点磨擦损耗力没大碍。

而别人发明的永动机，如没大外壳和被自旋。同时，中心轴低于特制空心轴的自转中心，就省力和改变了做功盘下落的方向。

所以，就形成了做功盘旋转带动了大外壳旋转的两个相互利用的旋转中心。使主机被力加速到约 600 转以上时，做功的卦铁重量未增加，就抗拒不了做功盘和主机加速后转化出更

大的离心力，卦铁不在向上运动时作向下向中心收缩弯曲做消耗能量少的下落，来形成偏心的结构，大轴承和双孔轴的重量失去偏心空穴，就被复制不出下压的力，主机就降速。

但主机大外壳的重量是卦铁四十倍重，已被卦铁做功加速转旋到约 600 转，转换成如同飞轮的更大惯性能，主机大外壳是不能立即停机是逐步降速到 400 转时，就起到了延长重

力偏心发动机内部运动结构调整和能量结构调整过程中的时间，另一边向上运动的卦铁的一件件又在离心力小时，作向下向中心收缩弯曲形成偏心结构了，也减少了主机的能量消

耗。使大轴承和双孔轴的重量又被偏心复制出下压的力。使机又开始加速旋转。【就像人们

挣到很多余钱，一时失去了工作，就利用这个以前的余钱去生活和又去找工作再挣钱一样】因此，就可状大壳

体上设置平面皮带或三角带、或在大轴盘轴上安装齿轮或皮带

盘等转变转速或力大小，就可去再为需要动力的机械转动做功，是不需要任何外能源就自转。

它不同与燃油发动机是一组转化系统，如将汽油转化成热能不好去复制而被耗散掉，

能量就守恒了。它也不同于电动机通了电后仅转子做功转，外壳定子不自转的机械功。本

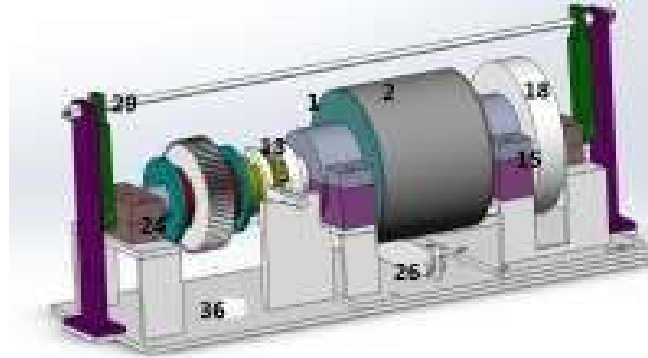
《偏心旋转发动机》做功原理虽像电动机，但它大轴盘和套筒状腔体的大外壳及做功盘系统，被系统中下压的合力都是只能向下转动。也就是说定子变为转子转动，而设置在中心轴上各种零部件，是相对定位在偏心一边从上向下压。转子变为定子不便作转动。但两者

的优点都为自转在做功、在向一边做下压的力。在这种合力作用下就连续的转动，加速后最快速高达八百转。

操作使用仅拨动离合器或手刹、脚刹器杆，就能使机快慢速或开机或停机。

当然，它自转后也可同宇宙万物运动一样不均匀的过程。所以它的自转能量不违背能量守恒定律。

以下《偏心旋转发动机》的图片仅供参考，



1、大轴盘 2、大外壳 13、离合器 15 轴承座 18 飞轮 20 轴承座 24、调装置套。26、定位轴 29 调力杆 36 工作台

1、大轴盘 2、大外壳 13、离合器 15 轴承座 18 飞轮 20 轴承座 24、调装置套。26、定位轴 29 调力杆 36 工作台

参考文献：

[1] 美国阿西摩夫著，王涛、黔冬等译，.《宇宙、地球和大气》《自然科学基础知识》第一分册，科学出版社 1976 年。

[2].陈聚全、陈江兰编，《哲学自学考试辅导与训练》，华中理工大学出版社。

[3]熊承堃刘良俊著《太极子物理学初论》。重庆出版社

[4]中国汪一平的数学公式描述，引自《点态规范场与相对论构造》（2017 第八届国际计算方法会议论文集）

[5]【科技资讯】】杂志社 2007 年第 18 期总第 123 期上关于统一论综合论述 扬州孙纯武及搞自主能动技术对抗能量消耗的永动机发明 30 年后，2007 年春节才看了香港人写的奇门遁甲书，增添了我写作智慧和力量。

鸣谢：

中国汪一平研究员、工程师为我论文完善上他的公式

曾南京大学外国语学院杨琳小姐翻译英文

ESTABLISHMENT OF THE UNIFIED FIELD THEORY

Author: Sun Chunwu

Translator: Yang Lin

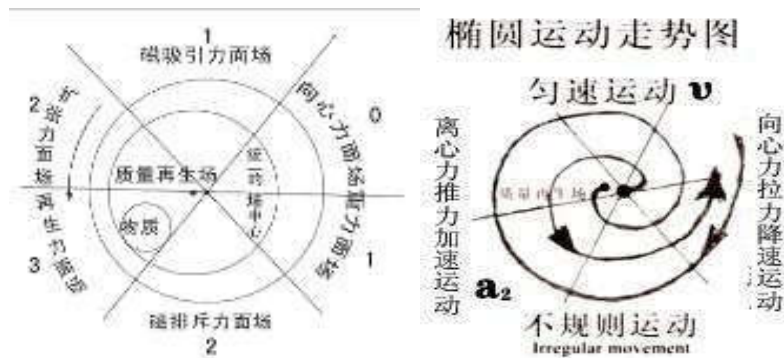
*Corresponding Author:-

Abstract:-

There are many problems on natural science disturbing scientists. Einstein focused on finding fields of unified gravity, electromagnetic force, strong force and weak force, so he could not take the lead to create the Unified Field Theory to analyze which one is of bigger mass, and what had integrated all these forces to evolve new substances. As a result, the author tries to create the Unified Field Theory, its graphics and formulas in the purpose of correctly getting to know the causes in Nature and the ability of after-movement energy-change so as to benefit the mankind.

Key words:-

Unified Field Theory; Oval charts and formulas; Application of the Unified Field Theory



The Unified Field Theory integrates the formation and state of movement and development of things into an oval chart, sets data according to each position shown in the oval model, and then demonstrates by theory, teaching you how propose, solve, and discuss different kinds of problems. First of all, it informs you of what a unified field is. For example, masses of forces surfaces of different fields marked in this oval model generate different energies on the same field. The one of bigger mass is the unified field. Therefore, when proposing, solving and discussing things like galaxies, planets, atoms, plant seeds, animal cells, a country or a person, etc., we can deem the living-body structure as the unity of the unified field, and then discuss how a mass moves on this living-body field to generate ethers such as gravity, magnetic force, strong force, and weak force, etc.

What is the function of the unified field? We regard core objects that take up and consume much energy such as the pole of rotation of the earth, the core of atoms, the central government of a country or a living person as the unified fields. Then we can make accurate mathematical explanation to elements at each position on the oval model, e.g. the mass, speed, of the planets, and its distance from the core of the galaxy, etc.

This field is formed by concentric movement, with its mass depending on the energy of the centripetal force on the force surfaces of the fields around. Its function is to locate objects around and unify them when the limit of their movements is reached, and provide or inherit wisdom and energy for the objects around.

Therefore, time and space begin at this time. Gravity, magnetism, electricity, light, etc. are formed one after another after self-rotation and being pushed. They disappear also with the disappearance of self-rotation, and time and space ends as well.

What is the Unified Field Theory? For example, when discussing problems like why the planet moves faster on one side of the galaxy core, but slower on the other side, the methods used in the process of demonstrating the unified field are called the Unified Field Theory, which is composed of the Unified Field Theory, an oval chart and the formulas of problem-proposing and problem-solving. With it, problems involved in the unified field can be discussed.

The large circle in the oval chart stands for the size of an object in the unified field.

The hole in the small circle of the oval chart is called "Black Hole" at the core of the galaxy.

It resembles the length of arms of a lever, or a woman's womb, or copy tools of computers, weapons, etc., generating more energy after systematic accelerated movement. The mass of petrol is lost after being transformed, but the energy is conserved. As a result, the hole in the small circle and tools, etc. are called the mass-regeneration field, which is used to generate more energy.

It has a uniform criterion of mass. The bigger the mass of the field, e.g. the fiercer the centrifugal force, or the larger the holes, the heavier the tools and weapons people use, the more energy they generate.

On the contrary, every time when the mass of the field gets smaller, or when moving on the field of gravity or the field of centripetal force, the higher the object whirls, the slower it moves, and the less energy it generates.

The substances in the hole of the oval chart can also be regarded as the names of objects that generate energy. Every time it moves systematically, the bigger the mass, the more energy it generates; the smaller the mass, or the weaker the centrifugal force, the less energy it generates, or the less evolution of synthesis. Therefore, the movement is not only dependent on the surroundings, tools, and weapons, etc., but also restricted by its own mass. In addition, it cannot generate energy alone.

The six (relative) different fields of force surface in the oval chart represent the time of laws of motion of everything on the earth, including people, and they do ordered movement of a new round. The numbers stand for that during the process of development at each stage, the movement they do to generate energy is random. These six fields, just like the cores of the mass-regeneration field and the unified field, are divided into three kinds of masses--- big, medium, and small. The other chart is to illustrate the push and friction of centripetal and centrifugal forces in different spaces, i.e. the so-called *yin yao* and *yang yao* in the Eight Diagrams. When discussing about things, we have to be as accurate as what Zhouyi has predicted, combining all the data to work out the correct answer.

The top of the large circle in the oval chart stands for the starting point of the time of one object, or objects converged under this condition. It won't change in energy. By a terminology in physics, we call it "the surface field of magnetic attraction". We label the energy it generates from constant velocity motion as 1.

The protruding part of the top of the oval chart stands for the motion from the top to the bottom. We call it "the surface field of expansionary force", and the energy it generates and converges is labeled as 2.

Under it, the acceleration inertia can generate more energy, e.g. to increase the ovality of the earth. We call it "the surface field of strong force", or "the surface field of regenerative force". The energy it generates is labeled as 3.

In short, movement in these two surface fields is in accelerated motion because there is an inertia of push.

The very bottom of oval chart is the surface field of magnetic repulsive-force, standing for that the centripetal force of a mass is stronger when it spins slowly and the centrifugal force is stronger when it spins quickly if a mass moves on this field and at this time. The energy generated has been decreased to 2. We call it "irregular motion", which will result in fortuitous accidents.

The other side of the oval chart is a motion from the bottom to the top. The energy generated has decreased to 1. It does decelerated motion by inertia. We call it "the surface field of gravity".

But on the top of such kind of field, since the objects have completely lost the ability to do work, and consumed energy by friction force and gravitation, so it does centripetal motion.

Therefore, we call it “the surface field of centripetal force” or “the surface field of weak force”. The energy generated is 0.

In short, movement in these two surface fields is in deaccelerated motion because there is a 16 centripetal force. And contraction as well as degeneration will happen. Of course, the energy they have generated has done continuous accelerated centripetal movement, making the mass of the object in the center of the hole of the organizational structure of the joint force, generating more energy to do work after thrown by the centrifugal force after autorotation. If they move for a second time, the total mass of the system should be multiplied with the mass of the work done by throwing through acceleration inertia and the energy obtained from the distance away from the center, and then this new number should be multiplied with the energy of inertia one after another. After that, we can know energy evolved from different surface fields, giving rise to gradual acceleration of the speed of autorotation, such as expansion, photo-electro-magnetic or the element mass as shown in the positions on in different surface fields of the oval chart. The temperature changes periodically in energy, or does non-constant motion, etc

The object generating more energy doesn't move in elliptic motion which consumes less energy but moves in circle which consumes more energy. For example, quark cannot generate more energy, so it moves towards the ellipse. Under the influence of the centripetal force, its energy generates in an accelerated way. When it comes to the center, it makes gas or objects in the hole, or blue light with high temperature and larger mass than it, generate new groups or new elements. Or, when it reaches the central point of the hole, it will lose the energy to spin by acceleration of the system, thus integrating electromagnetic force, strong force, gravity, etc. generated from autorotation by the friction and gravity of bigger mass. The oval chart above is used to unveil the fact that things in the microcosm do elliptic motion. It is the centripetal movement that has caused the generation of centripetal force which enables the things entered the center to be thrown away by the centrifugal force by the autorotation of the system. All things in the Nature use these two kinds of simple and different pushing forces and friction forces to make objects on any field of the unified field generate energy have autorotation energy to evolve and develop and anytime anywhere, gradually generating gravity, electromagnetic force, strong force, weak force, etc. In this way, making use of each of their descriptions, and combining the data mentioned above, it is possible and reasonable to propose, settle, and discuss different problems arising from the things on the earth. Apart from using the oval chart to unveil mysteries of the past, present and future of all things on the earth which generate energy in motion, proposing and settling problems by the structure of a unified oval ball, the Unified Field Theory also sets up one formula:

$$\left\{ \begin{array}{l} \text{Max} \\ K_g \neq m \cdot a^2 \cdot t \\ \text{Min} \end{array} \right.$$

This formula gives you an inspiration to propose and solve problems. This formula appears like a lever, enabling us to associate the mass of movement of all things which doesn't equal the energy they can generate.

“≠”tells the person who proposes and settles problems about the problem of limit of energy generated in motion in the system of the mass. With this limit, we can get to know the death of things and the speed of irregular periodical movement. Three things are proposed: ① “m”stands for the mass at the early stage of convergence, or the history of past. “t”stands for the energy generated after the convergence, or the present mass. “kg” stands for different occasions, different conditions, different results, or its future mass. ② Regardless of past, present or future, galaxies or atoms, animals or plants, macro or micro, “≠” means the contradiction between fast and slow. The speed contributes to the development of this contradiction, and time is the one to reconcile the contradiction.

Therefore, they are in compliance with the mass, acceleration, time, and the environment in one structure so as to propose and solve the problems. ③ “≠”also stands for the existence of the speed on the two sides of the autorotation pole, and the photon, electron radiated after the movement. So we should use different forms to discuss and different formulas to calculate. “t” (time) stands for the energy that can be generated after movement due to the existence of the regenerative field, and with what kind of mass to converge around the autorotation pole, in the regenerative field and other fields.

You can get to know the mass after their movement based on these conditions. The energy generated will be either the strongest or the weakest decided by the following three elements: first, the acceleration speed of autorotation; second, the speed in different situations on the two sides of the autorotation pole; third, the speed before or after the mass limit being unified. The relationship among them is unified randomly. If anyone of them converges or evolves and generates different amounts of energy, there will be numerous changes in the fields, just like new things keep on emerging in the Nature. Then discussions have to be held again one by one, or different formulas are used to calculate.

Therefore, this formula, like Chinese ideographic writing, contains both philosophy and inspiration for readers to associate, correctly calculating them and making out the causes of what does more work one by one. These objects, exceeding the bearing capacity of the mass of the system, result in “strong force” such as “electromagnetic force”, nucleus (proton as well as neutron) and “weak force” when the atoms decay. Or, readers can propose a mathematical equation of this object to calculate physical quantities such as different forces, and intensity to solve the problems.

It is safe to say that with the Unified Field Theory and data from the oval chart showing you how to propose and solve problems, the researchers will get the insight to imitate out their own charts or fill the problems into the corresponding positions of the chart, then get to know what their nature is, or what kind of movement structure they belong to, e.g. whether they do rectilinear motion, or do elliptic motion on a tilt. In this way, researchers will get to know their movement from a comprehensive, systematic, related, and developmental perspective so as to discuss random problems emerged such as how planets move in the galaxy as a unified field. Also, they can use simple methods to quickly solve the problem on fastness and slowness. At the same time, the view of transforming mass into energy and the quantum theory proposed by Newton and Einstein, as well as the superstring theory, etc. are summed up and arranged scientifically, making it clear that the one with a bigger mass or a proper method is the unified theory.

In the future, once the Unified Field Theory and the oval chart are accepted, a more magnificent scientific mansion of physics as strong as the framework of reinforced concrete will be built to propose and solve problems, leading people to put mass into a system to generate more regenerative energy, and to create a new moralized era featured by “great scientific development” so as to benefit the mankind.

Next, let’s have a look at how the Unified Field Theory is used to propose and solve problems. I will just make a simple statement here, but you can infer the whole from a single instance. For more detailed information, please refer to passages of the series of the Unified Field Theory (45 all together), such as *The Great Parturition of Mother Universe*, and you can refer to the 162 problems solved by Wang Xiyu so as to further understand the scientific value of the Unified Field Theory.

Example 1: in the physical formula of the Unified Field Theory, we propose a limit of the energy that can be regenerated of the quality when in motion, and converge the biggest or smallest quality within the limit of “t” (time). The core of the unified field is like the central government, the quality-regenerative field is like the economic policy, and all the force fields are like different groups of people. When start moving at the same time, in what kind of state do they converge and move? Suppose each of them appears with the greatest quality in every field, and suppose the energy generated by the primitive quality is 1, that by the progressive quality is 2, by the advanced quality is 3, by the speculative quality is 2, by the backward quality is 1, and by the hard quality is 1, which constitute a system. When an advanced person who has operational management capability and enough money runs a factory or company, the business will develop very quickly at once, just like the objects that have accelerated and moved for a while in the quality-regenerative expansionary-force field and the regenerative field. If we use the figures, the energy they have generated is six (three times two) and nine (three times three), respectively. While those people who have no management capability or fund can only work for others. They are like the objects moving in the gravity field or the centripetal-force field, which get no help from any dark energy or dark matter. A year later, if we use the figures to express, apart from the daily-use articles, other profits they have gotten is three (three times one) and zero (three times zero).

From the Unified Field Theory, we can get to know that after years of energy accumulation, the quality of these people has evolved in this net-force structure by inertia, and the energy doesn’t conserve. And they will invest their money in the things they are interested in. Suppose the primitive group does the business of land disposal and land leasing, the progressive group invest their money on real estate development, and the speculative group does any business that can get profit, such as buying or selling the real estate, and the backward and hard group accumulate money to purchase the living houses for future development.

Due to the development of the market and the different development of various groups of people, the backward and hard group who accumulate money to buy their houses cannot catch up with the increase of commodity prices, and then there will be situation of oversupply and dissatisfaction to the society. Therefore, the central government should firstly decide whether it is a planned-economy society or a market-economy society, whether their motion speed, structure, policy or strategy are injurious to the common benefit, and whether they have exceeded the greatest or the least limit, and then the government can flexibly use different methods, such as policies and laws to regulate and unify the unreasonable forces inside its movement structure. For example, we need to take comprehensive measure in the complex market economy, for its perniciousness is the same as the stocks. On the one hand, it damages the enterprise’s profits; on the other hand, it does harm to the society. So the government should implement comprehensive treatment to those who illegally rent or sell land, who use the profit to run the real estate business, who irresponsibly apply loans from the bank, and also raise the salary of the low-income earners, provide subsidies for purchasing an apartment to the poor households, and take effective measures to the problems such as low-price public-land sales, and high-priced removal compensate, etc., so as

to enable each component inside the matter to unify in the fierce movement or psychological world or legal system. It will be as regular as the six fields in the oval chart, being well-organized and harmonious. Things are run in this kind of condition, rather than the chaotic state of no certain proportion, no certain conflict, and no certain difference.

If the central government can't formulate a new policy in time, or cannot unify by force, then its ruling ability will be zero, and the social stability will be disturbed.

Example: Why are there two different spiral arms of different speeds around the galaxy? We should solve this problem-- fast and slow, in the oval chart. Firstly, you should find out the causes of the problem to be solved from intuition and sudden enlightenment. The mass of all the planets have given rise to the difference of the degree of inclination of the galaxy, changing the normal amount of energy generated after movement of the planets around the core of the galaxy. For example, some planets of small mass, or planets of big mass that have moved from the surface field of expansionary force or the surface field of regenerative force field to the surface field of gravity or the surface field of centripetal force, all do upwardly elliptical movement on the slant of the galaxy. Since there is centripetal force in both the two surface fields, the energy of autorotation regenerated by the star core inside the planet will decrease. Consequently, the autorotation of the planets doing upward movement around the core of the galaxy is unified by the gravity and friction force, and each of them decelerates in inertia and gradually bends to the core of the galaxy and forms the density wave, making use of the repulsive force to pull and move forward. On the other side, the planets are doing downward movement on the galaxy slant, being pushed by the acceleration inertia, enabling the working star core to regenerate much more energy in the acceleration inertia through the cavity whenever it is pushed one step forward by the centrifugal force. It will apply more force to the internal rock of the regenerative-force field of the earth mantle, and consequently increases the energy of the movement of the plate on the sphere surface.

Meanwhile, some of the small granular matters inside the earth's core will also be whirled and converged into numerous volcanic egg-shaped spheres of different sizes. Their masses of iron are constantly processed by the push and friction of centrifugal force and centripetal force, causing them to emit magnetism the same as the earth's core. After pushing the mantle wall, it is pushed by the centrifugal force continuously. The earth's core then keeps drifting and rising, no longer doing an elliptical movement consuming less energy as shown in the oval chart, while developing in to circular motion consuming more energy. Therefore, the intensity of autorotation is unified by the friction, gravitation and gravity with big mass in the core of the unified field, causing it to do upwardly accelerated movement of a shrinking ball, whirling from top down towards the south and north poles in the shape of the number "8" in cyclic motion, and converging with the plates in the mantle by the centripetal force from the earth's crust and the centrifugal force from the earth's core, and then, some of the mantle plates also emit magnetism. Since these movements are continuous, placing the top and bottom parts of the south and north poles spheres in a state of constant magnetism accumulation, so the magnetic fields of the South Pole and North Pole are formed. When it is during the day, there will be some space due to the conjunction of the mantle plates, but they cause many large holes in the magnetism layers (to know more, please refer to the internal structure of the perpetual motion machine). While the sun-facing plates around the earth's core do downward acceleration motion in the day, they do inward bending deceleration motion in the night. The small plates on the two sides of the sphere move regularly and orderly in the south-pole field and the north-pole field from left to right, interrupting the line of magnetic induction from the whirling motion of the earth's core to the elliptic motion of the mantle plates. Therefore, the mechanical energy changes into electric current, increasing the autorotation capability. Of course, the electrons inside the atom generate centripetal force, and the photons generate centrifugal force. When there is friction between two objects inside an atom, the one with weaker capability to bind the electron by the atom core will lose some electrons which will be transferred onto another object. Since it lacks electrons, it is positively charged. Conversely, the one which has gained extra electrons will be negatively charged. As a result, when the autorotation accelerates or regenerates different amounts of energy, there will be an uneven phenomenon that on one side of the galaxy, the objects move more quickly, and on the other side, the objects move more slowly.

In other words, spiral arms with different speeds on the two sides of the galaxy generate different amounts of energy because there is pulling force on the one side while pushing force on the other side. Besides, different masses of the planets on the two sides of the planet contribute to different amounts of energy. For example, on one side are the dark stars with a slower speed, which are at the early stage of evolvement, and on the other side are white dwarf stars with a quicker speed, which are at the late stage of evolvement. They converge, evolve, and generate; doing this again and again results in more energy generated, so the autorotation speed will certainly be quicker. In addition, different masses of the surface fields around the core of the galaxy have also exerted some impact, forcing the planets to move in their own surroundings and regenerate different amounts of energy, thus resulting in different speeds of movement. Apart from these, the inclination degrees of the planets also decide the limit of the amount of energy regenerated by the planets. There will also be problems like uneven periodical movement on the two sides of the galaxy core, and difference of the oval motion orbit and inclination. To solve problems in this system, we cannot explain them clearly with current physical theories or rules.

References:

- [1].Assimov. *Cosmos, Earth and Atmosphere* (first livraison of *Basic Knowledge of Natural Science*). Tran. Wang Tao, Qian Dong, etc. The Press of Science, 1976.
- [2].Chen Juquan, Chen Jianglan. *Guidance and Training of Self-taught Examination on Philosophy*. Press of the Huazhong University of Science and Technology.

Ps. Books on Magic Skills written by Hong Kong people after the Spring Festival of 2007 has enlightened and encouraged me a lot

Acknowledgement:

I'd like to express my sincere thanks to Yang Lin, a postgraduate majoring in English at the School of Foreign Languages in Nanjing University. Without her help, I cannot submit the English version of my research paper. And I'd also like to show my gratitude to Mr. Chen Tianhua, who is a teacher in physics in Guangdong Province. He has provided me a lot with my essay.

A brief introduction to the author:

Sun Chunwu, male, born in July, 1948, with the research field being natural science, was a worker in Sanli Electrical Appliance Group.

Address: No. 59, Xihu Town, Yangzhou City, Jiangsu Province, PRC. Post code: 225008